



THE
Ansley
5 BEDROOM HOME

The Ansley is a 5 bedroom detached home with an integral garage, offering plenty of space for growing families. Featuring a spacious kitchen diner/family room which overlooks the rear garden, a utility, spacious lounge, study and guest cloakroom.

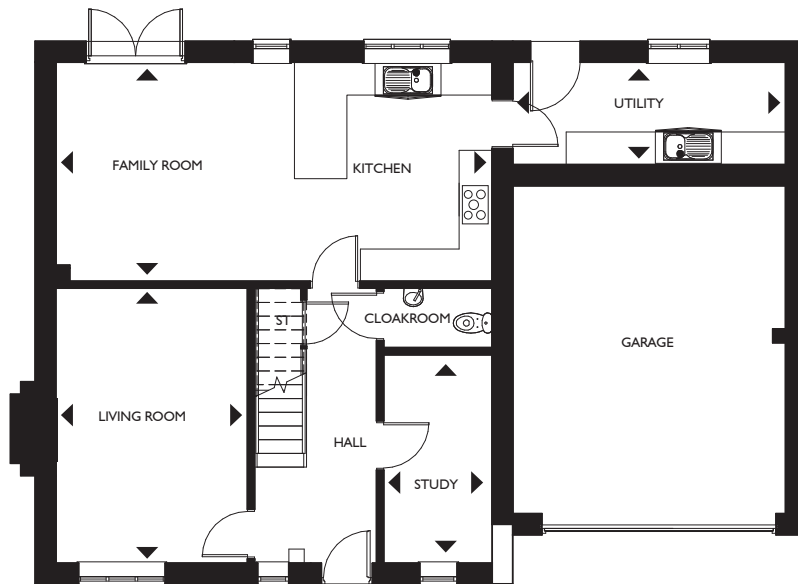
To the first floor is the master suite complete with dressing room and en-suite shower, bedroom 2 with en-suite, 3 further bedrooms and a family bathroom.

Outside there is a driveway offering ample additional parking and an enclosed rear garden.



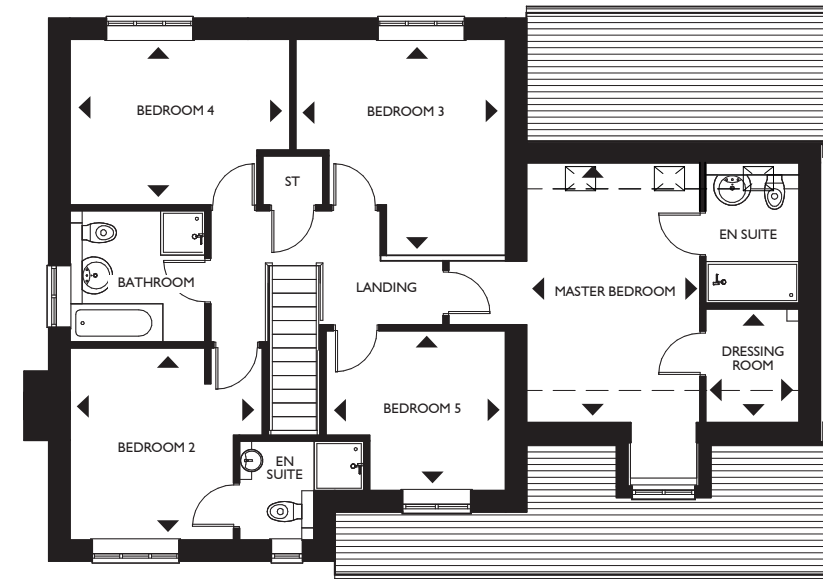
ORTON PARK

Twycross, Warwickshire



Ground floor

Living Room	3530mm x 5053mm	11'7" x 16'7"
Kitchen/Family Room	5350mm x 4032mm	17'6" x 13'3"
Utility	5000mm x 1898mm	16'5" x 6'2"
Study	3840mm x 2013mm	12'7" x 6'7"



First floor

Master Bedroom	3168mm x 4963mm	10'4" x 16'3"
Dressing	1763mm x 1993mm	5'9" x 6'6"
Bedroom 2	3546mm x 2505mm ^{max}	11'7" x 8'2" ^{max}
Bedroom 3	3979mm x 3868mm	13'0" x 12'8"
Bedroom 4	4055mm x 3064mm	13'3" x 10'0"
Bedroom 5	3318mm x 2961mm	10'10" x 9'8"