



THE  
**Arbury**  
5 BEDROOM HOME

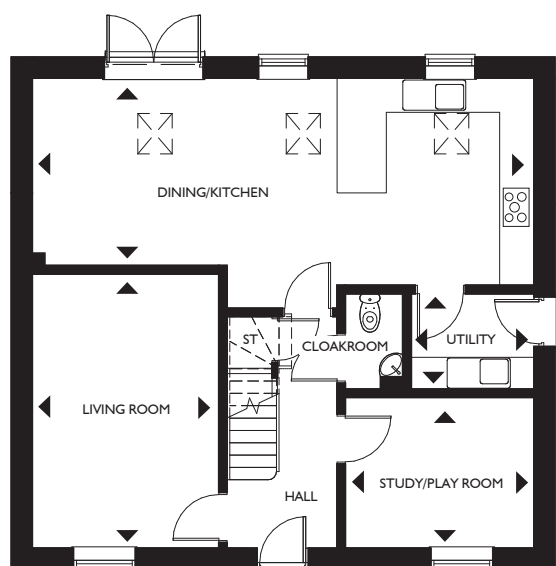
Traditionally designed with a spacious interior, the 5 bedroom 2.5 storey Arbury is a perfect family home. An impressive entrance hall leads to the lounge, a stunning kitchen diner with utility to the rear, overlooks the rear garden. A study/playroom and guest cloakroom complete the ground floor.

To the first floor bedroom one with a dressing area and en-suite can be found alongside 2 further bedrooms and the family bathroom. To the second floor there is 2 bedrooms and a shower room.

Outside there is a detached garage and additional carport (on plot 3 only) offering ample off road parking and an enclosed rear garden.

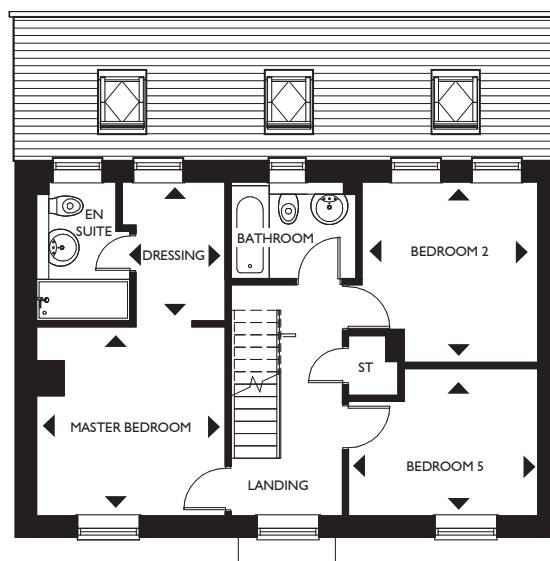


ORTON PARK  
Twycross, Warwickshire



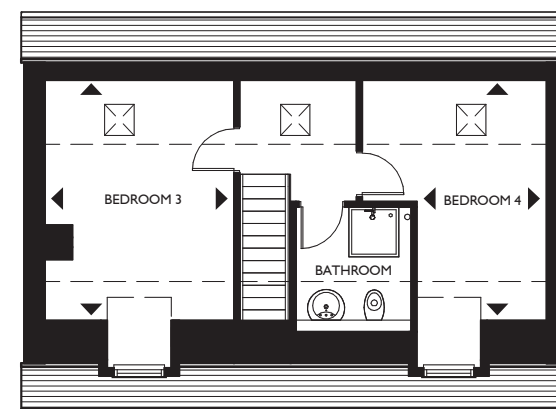
### Ground floor

Living Room	3450mm x 5050mm	11'3" x 16'7"
Dining/Kitchen	3472mm x 9195mm	11'4" x 30'2"
Utility	1790mm x 2290mm	5'10" x 7'6"
Study/Playroom	3490mm x 2800mm	11'5" x 9'8"



### First floor

Master Bedroom	3494mm x 3485mm	11'6" x 11'5"
Dressing	2574mm x 1910mm	8'5" x 6'3"
Bedroom 2	3253mm x 3337mm	10'8" x 10'11"
Bedroom 5	3498mm x 2735mm <sup>max</sup>	11'6" x 8'11" <sup>max</sup>



### Second floor

Bedroom 3	3953mm x 3394mm	12'11" x 11'1"
Bedroom 4	3953mm x 3394mm <sup>max</sup>	12'11" x 11'1" <sup>max</sup>