



THE
Aston

4 BEDROOM HOME

There is a wealth of space to cater for family lifestyles in the four bedroom Aston. An impressive dual aspect kitchen diner leads to the rear garden. The spacious lounge with French doors also overlooks the rear aspect, a study and guest cloakroom complete the ground floor.

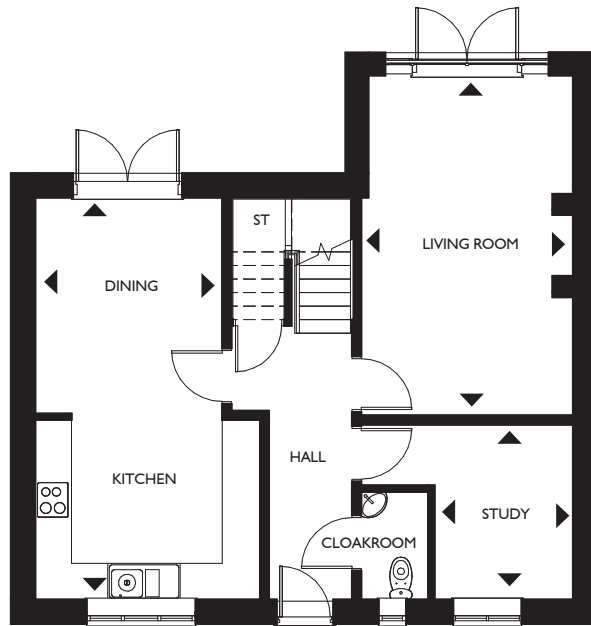
Upstairs bedroom one with en-suite can be found alongside 3 further bedrooms and the family bathroom.

Outside there is a single detached garage with driveway offering off road parking and an enclosed rear garden.



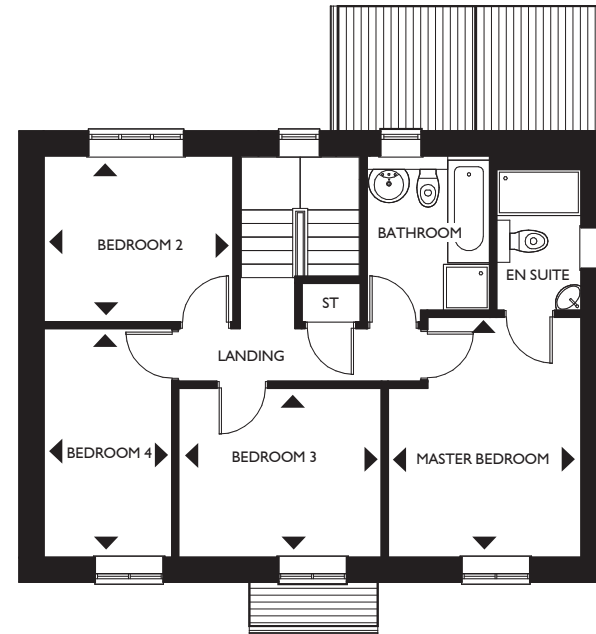
ORTON PARK

Twycross, Warwickshire



Ground floor

Living Room	5685mm x 3560mm	18'7" x 11'8"
Dining/Kitchen	6710mm x 3775mm ^{max}	22'1" x 12'4" ^{max}
Study	2335mm x 2875mm	7'8" x 9'5"



First floor

Master Bedroom	4165mm x 3245mm	13'8" x 10'7"
Bedroom 2	3185mm x 2797mm ^{max}	10'5" x 9'2" ^{max}
Bedroom 3	3400mm x 2850mm	11'1" x 9'4"
Bedroom 4	3838mm x 2166mm	12'7" x 7'1"