



THE
Beaumanor

4 BEDROOM HOME

The four bedroom Beaumanor is ideal for the growing families in search of extra space. A kitchen/diner with sunroom is the hub of the house. Complete with utility, spacious lounge, study and guest cloakroom to the ground floor.

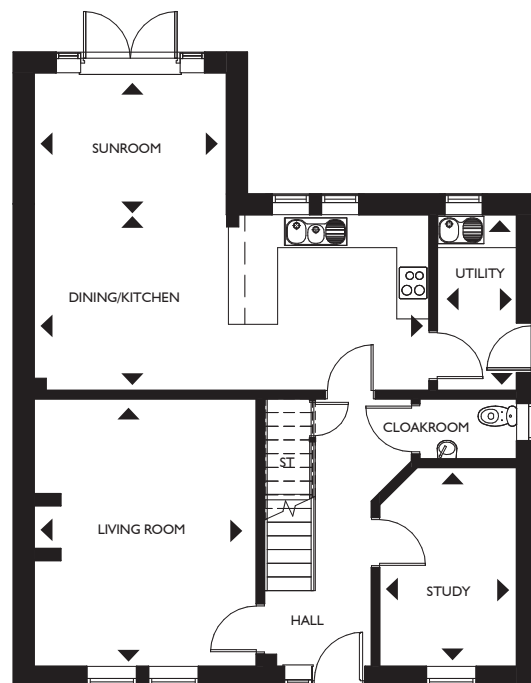
Upstairs bedroom one with en-suite can be found alongside bedroom two with en-suite and a further 2 further bedrooms and the family bathroom.

Outside there is a single detached garage and a driveway offering off road parking and an enclosed rear garden.



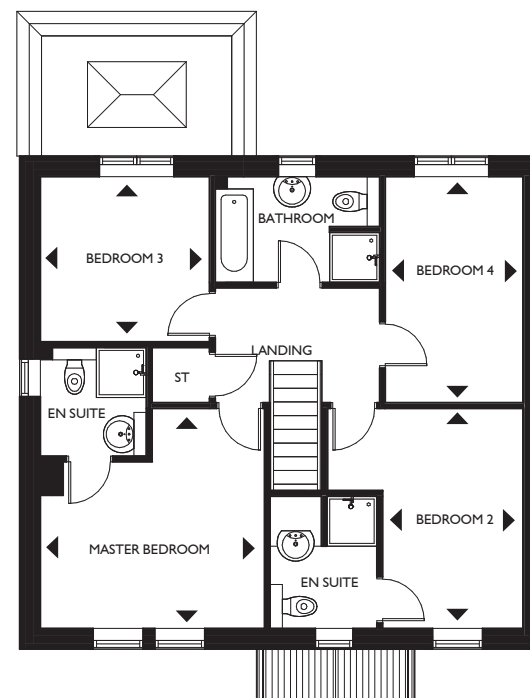
ORTON PARK

Twycross, Warwickshire



Ground floor

Living Room	4930mm x 4100mm	16'2" x 13'5"
Dining/Kitchen	7248mm x 3528mm	23'9" x 11'7"
Sunroom	2588mm x 1800mm	8'6" x 5'11"
Utility	1500mm x 3255mm	4'11" x 10'8"
Study	3655mm x 2548mm	11'11" x 8'4"



First floor

Master Bedroom	4123mm x 4050mm ^{max}	13'6" x 13'4" ^{max}
Bedroom 2	4050mm x 3600mm ^{max}	13'4" x 11'10" ^{max}
Bedroom 3	3123mm x 3050mm	10'3" x 10'0"
Bedroom 4	4160mm x 2550mm	13'8" x 8'5"