



THE  
**Bosworth**

5 BEDROOM HOME

The Bosworth occupies an imposing corner position offering a wealth of space throughout. This 5 bedroom detached family home enjoys a superb kitchen diner/family room which is the hub of the house. A utility, spacious dual aspect lounge, study and guest cloakroom.

Upstairs the master suite has a dressing area and en-suite, bedrooms 2 & 3 both with en-suite, 2 further bedrooms and the family bathroom complete the home.

Outside is a double garage with driveway and an enclosed rear garden.



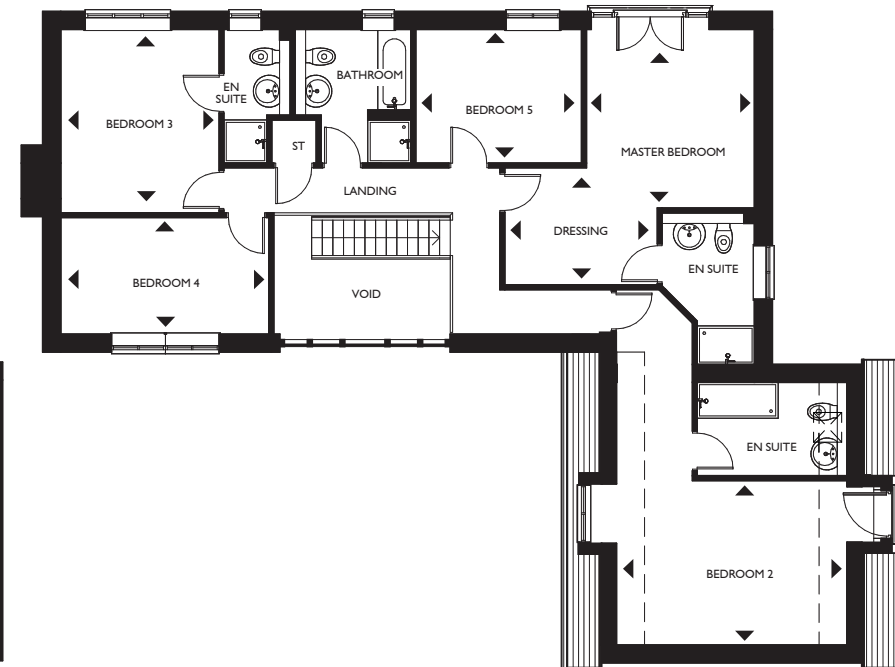
ORTON PARK

Twycross, Warwickshire



### Ground floor

Living Room	6486mm x 3548mm	21'3" x 11'7"
Kitchen/Dining/Family	8198mm x 4988mm <sup>max</sup>	26'8" x 16'4" <sup>max</sup>
Utility	2035mm x 3528mm	6'8" x 11'6"
Study	3850mm x 2650mm	12'7" x 6'7"



### First floor

Master Bedroom	3810mm x 3587mm	12'6" x 11'9"
Dressing	2498mm x 3173mm	8'2" x 10'5"
Bedroom 2	5995mm x 3510mm <sup>max</sup>	19'8" max x 11'6" <sup>max</sup>
Bedroom 3	3910mm x 3383mm	12'10" x 11'1"
Bedroom 4	4433mm x 2588mm	14'6" x 8'6"
Bedroom 5	3500mm x 2860mm	11'6" x 9'4"