



THE  
**Chatsworth**

4 BEDROOM HOME

The four bedroom Chatsworth is ideal for the growing families in search of extra space. An entrance hallway leads to the guest cloakroom, lounge, stunning kitchen/ diner with French doors leading out to the rear garden.

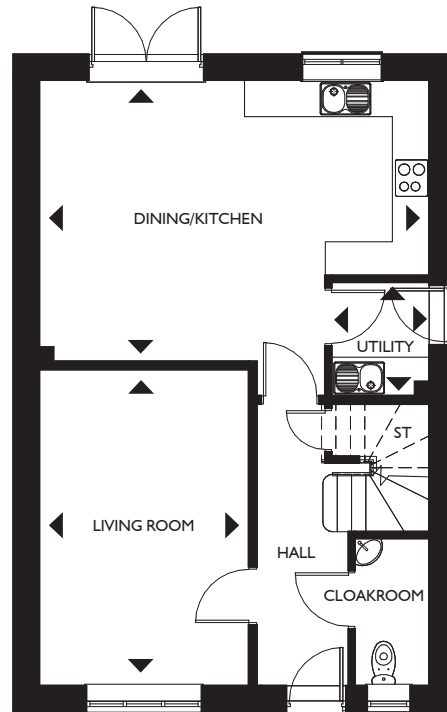
Upstairs bedroom one with en-suite can be found alongside 3 further bedrooms and the family bathroom.

Outside there is a single detached garage a driveway, offering ample off road parking and an enclosed rear garden.



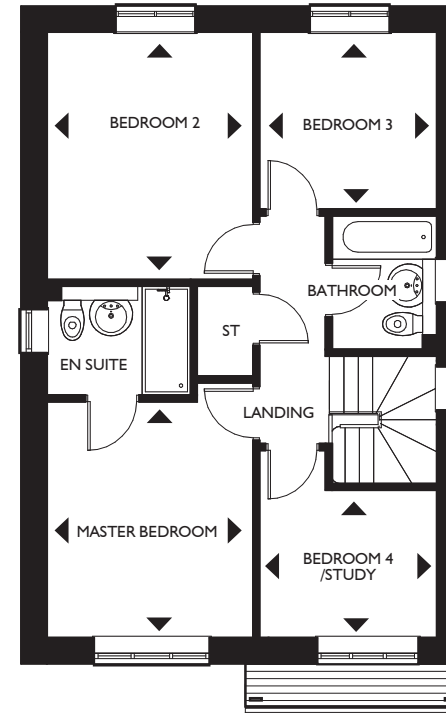
ORTON PARK

Twycross, Warwickshire



### Ground floor

Living Room	4994mm x 3323mm <sup>max</sup>	16'4" x 10'11" <sup>max</sup>
Dining/Kitchen	6160mm x 4446mm <sup>max</sup>	20'2" x 14'7" <sup>max</sup>
Utility	1567mm x 1811mm	5'1" x 5'11"



### First floor

Master Bedroom	4035mm x 3267mm	13'2" x 10'8"
Bedroom 2	3916mm x 3267mm	12'10" x 10'8"
Bedroom 3	2818mm x 2814mm	9'3" x 9'3"
Bedroom 4/Study	2352mm x 2818mm	7'8" x 9'3"