



THE
Prestwold

5 BEDROOM HOME

The Prestwold occupies an imposing corner position offering a wealth of space throughout. This 5 bedroom detached family home enjoys a superb kitchen diner/family room which is the hub of the house. A utility, spacious dual aspect lounge, study and guest cloakroom.

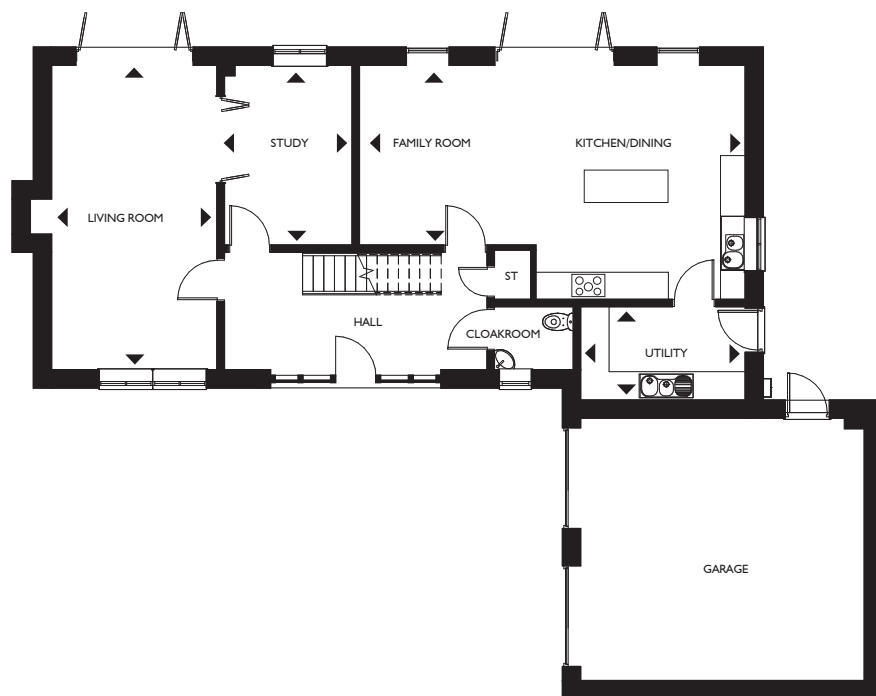
Upstairs the master suite has a dressing area and en-suite, bedrooms 2 & 3 both with en-suite, 2 further bedrooms and the family bathroom complete the home.

Outside is a double garage with driveway and an enclosed rear garden.



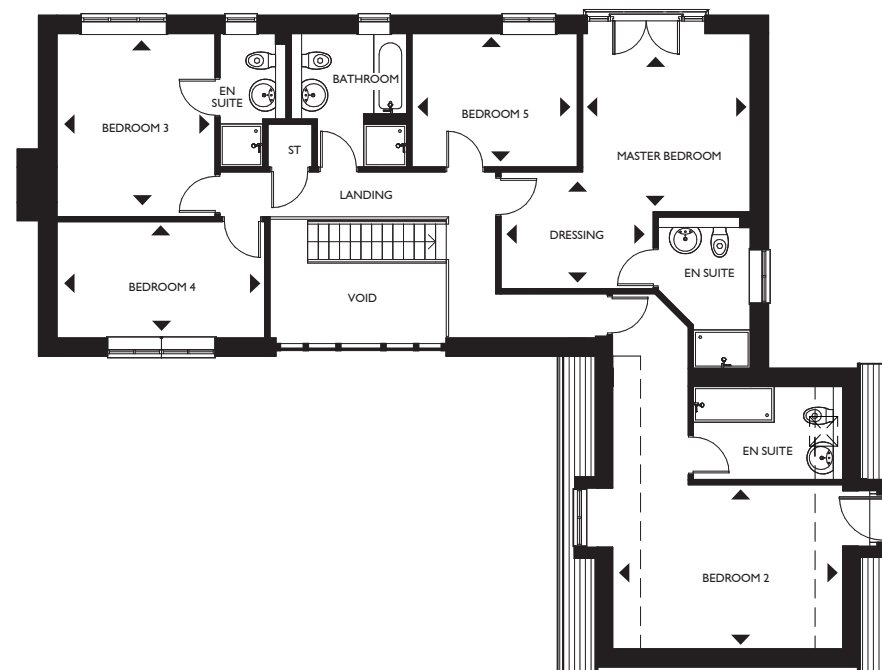
ORTON PARK

Twycross, Warwickshire



Ground floor

Living Room	6486mm x 3548mm	21'3" x 11'7"
Kitchen/Dining/Family	9195mm x 4988mm ^{max}	30'2" x 16'4" ^{max}
Utility	2378mm x 3528mm	7'9" x 11'6"
Study	3850mm x 2750mm	12'7" x 6'7"



First floor

Master Bedroom	3810mm x 3587mm	12'6" x 11'9"
Dressing	2498mm x 3253mm	8'2" x 10'8"
Bedroom 2	5995mm x 3510mm ^{max}	19'8" x 11'6" ^{max}
Bedroom 3	3910mm x 3383mm	12'10" x 11'1"
Bedroom 4	4435mm x 2500mm	14'6" x 8'2"
Bedroom 5	3526mm x 2860mm	11'6" x 9'4"